

Technical Bulletin



Model(s)	Year	Eng. Code	Trans. Code	VIN Range From	VIN Range To
All	1996 - 2008	All	All	All	All

Condition

69 08 01 Jan. 7, 2008 **2011170**, Supersedes Technical Bulletin Group 69 number 06-03 dated Feb. 3, 2006 due to additional model years

Module, Airbag, Color Code Identification and Coding

Prior to replacing Airbag System components, it is important to properly identify the airbag module color code.

Technical Background

Not applicable.

Production Solution

Not applicable.

Service



WARNING

When working on ANY airbag system, ALWAYS read and follow Repair Manual Group 69 WARNINGS, Precautions, Notes and Tips!



Tip:

Prior to removing original equipment airbag control module, record part number, coding, and color code for reference. This information can be helpful when identifying updates or changes made to modules and matching components. There are several ways to identify this information on original and new modules.

For modules beginning with part number 6NO or 1J0, the color code can be identified after the first 9 digits of the part number.



Tip:

Example – 1J0-XXX-XXX **J** In this example, suffix **J** is the color code and the proper coding is 74.

Technical Bulletin



Refer to chart below.

6NO or 1J0 Module							
Color Code	Coding	Color Code	Coding	Color Code	Coding	Color Code	Coding
A	65	AA	16705	BA	16961	CA	17217
B	66	AB	16706	BB	16962	CB	17218
C	67	AC	16707	BC	16963	CC	17219
D	68	AD	16708	BD	16964	CD	17220
E	69	AE	16709	BE	16965	CE	17221
F	70	AF	16710	BF	16966	CF	17222
G	71	AG	16711	BG	16967	CG	17223
H	72	AH	16712	BH	81	CH	17224
J	74	AJ	16714	BJ	82	CJ	17226
K	75	AK	16715	BK	16971	CK	17227
L	76	AL	16716	BL	16972	CL	17228
M	77	AM	16717	BM	16973	CM	17229
N	78	AN	16718	BN	16974	CN	17230
P	80	AP	16720	BP	16976	CP	17232
Q	81	AQ	16721	BQ	16977	CQ	17233
R	82	AR	16722	BR	16978	CR	17234
S	83	AS	16723	BS	16979	CS	17235
T	84	AT	16724	BT	16980	CT	17236

For modules beginning with part numbers other than 6NO or 1J0 (after model year 1999), the color code can be identified after the 9 digit part number and suffix.



Tip:

1C0 XXX XXX AF / 001. In this example 001 is the color code and 12337 is the coding.

Refer to chart below.

Technical Bulletin



Airbag Control Modules (EXCEPT 6NO and 1JO)

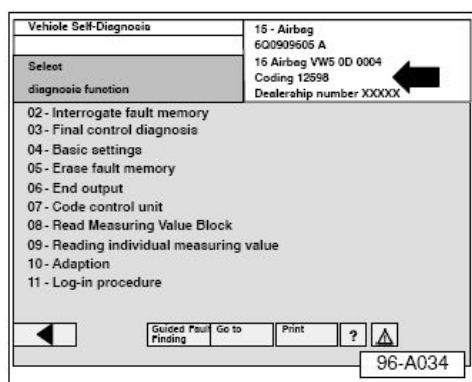
Color Code	Coding	Color Code	Coding	Color Code	Coding	Color Code	Coding	Color Code	Coding	Color Code	Coding
01	12337	44	13364	1A	12609	3A	13121	6U	13909	Y5	22837
02	12338	61	13873	1B	12610	3B	13122	6V	13910	Y6	22838
03	12339	62	13874	1C	12611	3C	13123	6W	13911	Y7	22839
04	12340	63	13875	1D	12612	3D	13124	6X	13912	Y8	22840
05	12341	64	13876	1E	12613	3E	13125	6Y	13913	Y9	22841
06	12342	65	13877	1F	12614	3F	13126	6Z	13914	ZA	23095
07	12343	66	13878	1G	12615	3G	13127	XA	22593	ZB	23096
08	12344	67	13879	1H	12616	3H	13128	XB	22594	ZC	23097
09	12345	68	13880	1J	126618	3J	13130	XC	22595	ZD	23098
10	12592	69	13881	1K	126619	3K	13131	XD	22596	ZE	23099
11	12593	70	14128	1L	12620	3L	13132	XE	22597	ZF	23100
12	12594	71	14129	1M	12621	3M	13133	XF	22598	ZH	23102
13	12595	72	14130	1N	12622	3N	13134	XG	22599	ZJ	23104
14	12596	78	14136	1P	12624	3P	13136	XH	22600	ZK	23105
15	12597	79	14137	1Q	12625	3Q	13137	XJ	22602	ZL	23106
16	12598	0A	12353	1R	12626	3R	13138	XK	22603	ZM	23107
17	12599	0B	12354	1S	12627	3S	13139	XL	22604	ZN	23108
18	12600	0C	12355	1T	12628	3T	13140	XM	22605	ZP	23110
19	12601	0D	12356	2A	12865	5L	13644	XN	22606	ZQ	23111
21	12849	0E	12357	2B	12866	5M	13645	XP	22608	ZR	23112
22	12850	0F	12358	2C	12867	5N	13646	XQ	22609	ZS	23113
23	12851	0G	12359	2D	12868	5P	13648	XR	22610	ZT	23114
24	12852	0H	12360	2E	12869	5Q	13649	XS	22611	Z1	23089
25	12853	0J	12362	2F	12870	5R	13650	XT	22612	Z2	23090

Technical Bulletin



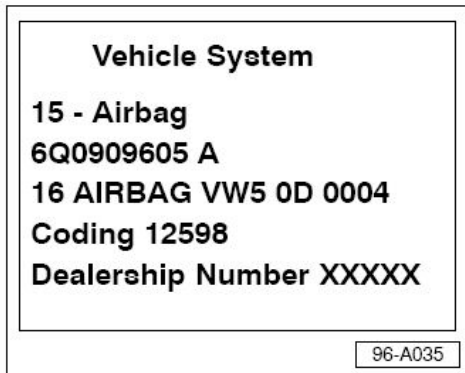
26	12854	OK	12363	2G	12871	5S	13651	X1	22577	Z3	23091
27	12855	OL	12364	2H	12872	5T	13652	X2	22578	Z4	23092
28	12856	OM	12365	2J	12874	6A	13889	X3	22579	Z5	23093
29	12857	ON	12366	2K	12875	6B	13890	X4	22580	Z6	23094
31	13105	OP	12368	2L	12876	6K	13899	X5	22581	Z7	23095
32	13106	OQ	12369	2M	12877	6L	13900	X6	22582	Z8	23096
33	13107	OR	12370	2N	12878	6M	13901	X7	22583	Z9	23097
34	13108	OS	12371	2P	12880	6N	13902	X8	22584		
35	13109	OT	12372	2Q	12881	6P	13904	X9	22585		
36	13110	OW	12375	2R	12882	6Q	13905	Y1	22833		
37	13111	OY	12377	2S	12883	6R	13906	Y2	22834		
38	13112			2T	12884	6S	13907	Y3	22835		
39	13113					6T	13908	Y4	22836		

Module Identification



- Connect VAS 5051/ VAS 5052
- Select Address word 15-Airbag and record information from module identification screen.

Technical Bulletin



- This information can be viewed on VAS 5051/VAS 5052 scan tool address word 15-airbag in the example shown, the Color Code for coding number 12598 is 16 (see table).



Tip:

Note that the index number (black arrow) listed on the module label is a hardware number and **IS NOT** used for coding purposes.

If unable to access Address word 15-Airbag, using VAS 5051/5052 due to communication errors, record color code (white arrow) from module detail label if available. This is an add-on label placed over the original module label.



Note:

When ordering a new control module, always order by using the Vehicle Identification Number (VIN) to obtain correct/latest software. The color code can also be found on part box label!

If the color code is shown as a 3 digit code the first number can be disregarded. The first digit is usually a "0" or a "1", but the coding remains the same, e.g. the coding for 16A would be the same as for 06A.

Technical Bulletin



After installing new control module, check control module for fault codes and repair as necessary before attempting to enter coding.



Tip:

If you find that additional fault codes are received after installing a new control module with a new part number and/or color code, additional components may also require replacement to match the new module-check for latest parts updates using VIN.

Example

Initial fault received 00003; the technician replaces Control Module part number 1C0-909-605-F-**004** with a Module part number 1C0-909-605-F-**01E**.

New control module is installed and now DTCs 01221, 01222, 01738, or 1739 (side crash sensors-no or incorrect basic settings) is displayed.

One possible cause could be the incorrect control module was installed.

Another possible cause is the control module has been updated to a new software level (noted by the change in the part number and/or color code), in which case, the 1C0 909 605 F / 004 module is matched to crash sensors that have a color code of 02. The new module 1C0 909 605 F / 01E will not communicate properly with these crash sensors, and the crash sensors **MUST** also be replaced with update versions.

If no fault codes are received (with the exception of 01042 – Control Module Not Coded):

- Select Guided Functions.
- Select Address word 15-Airbag
- Select Airbag control module coding and proceed with coding control module.

When finished coding:

- Cycle Ignition OFF/ON
- Select vehicle self diagnostics and verify correct coding in address word 15-airbag.

Warranty

Information only.

Required Parts and Tools

No Special Parts required. No Special Tools required.

Additional Information

All part and service references provided in this Technical Bulletin are subject to change and/or removal. Always check with your Parts Dept. and Repair Manuals for the latest information.