

Volkswagen TOUAREG

2015

REPAIRING central ARMREST



Index

Repairing the central armrest.....3

 Description.....3

 Before Repair.....3

 Repair steps.....6

Repairing the central armrest

Description

The central armrest is composed of 2 covers which can open by pulling them up, and slide to allow more convenient usage of armrest.

The covers seems to be a bit weak, and may break in special situations that we cannot exactly determine. Sitting on it ? Sliding it too far or too strongly ? Or trying to disassemble it with a bad method (by pulling up for instance) ?

I discovered that on my recently purchased used Touareg the driver armrest was broken. Not seen when purchasing, unfortunately.

When Volkswagen representative announced me that the part was not detailed, and that all the armrest console was made available for the little amount of 960 Euros... I decided to repair...

Having no idea on how was made the broken part, I decided to try to remove the not broken one, passenger side.

I used a small metal blade to push down the back plastic panel of the armrest, but unfortunately, I broke the body as on the driver side !

Anyway, if I find the way of repairing one, it will be simple to repara both !

Before Repair

The following photos show the situation of broken parts.

The previous owner had certainly not understood the mechanism, and put some glue in inappropriate places...

Situation: driver side, broken parts were not present inside.

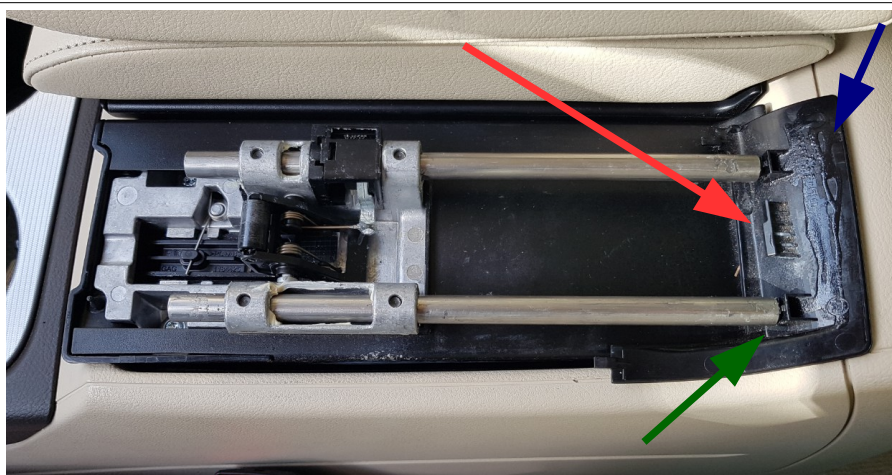




The normal method to disassemble the device is to first pull the back plastic panel (blue arrow), while slightly pulling down the middle tab as indicated in red.

The back panel is a bit hard to extract from the slide tube, but it should come out (green arrow).

Notice the presence of glue on this panel, which did not have any effect (should have been glued on leather !)

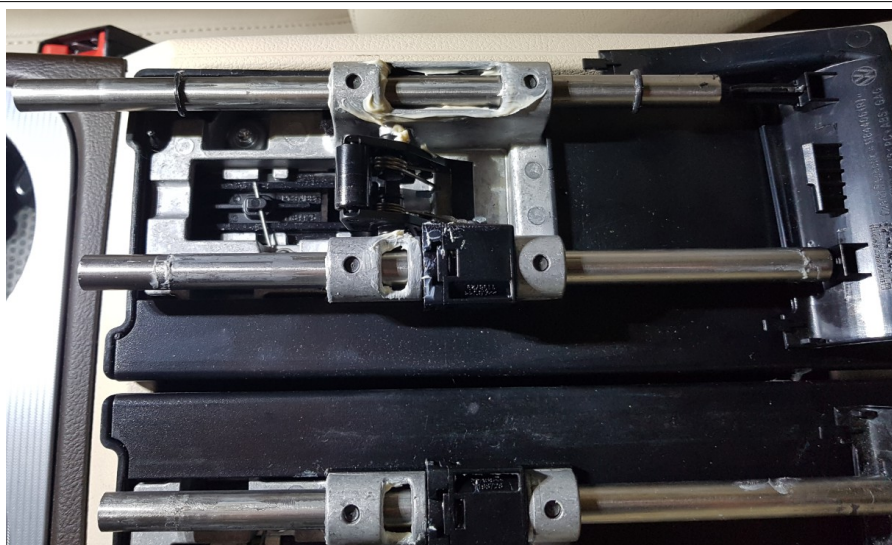


Passenger side (right), once opened and broken.

You can see 2 Orings on the free slide tube.

The master tube (managed by the lever mechanism) has none.

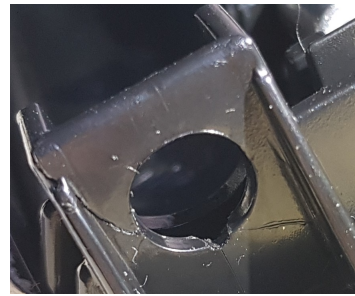
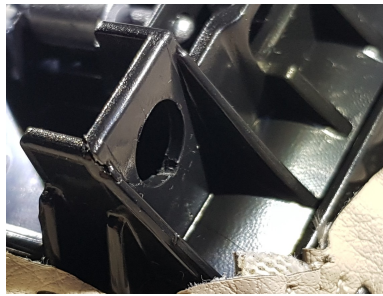
The tubes are made of stainless steel, which is not so bad.



One side fully broken



The other side is also slightly broken

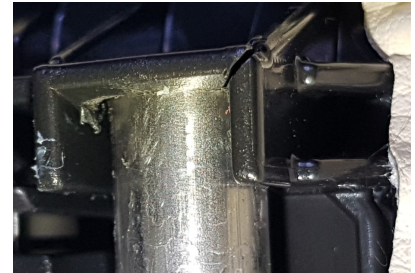


Slide tube seems to be a bit too long (207,86mm) to fit inside the plastic body (I have measured 207,5mm) without forcing. This can crack the small back side wall.
Tubes have not the same size, some are 208mm long.

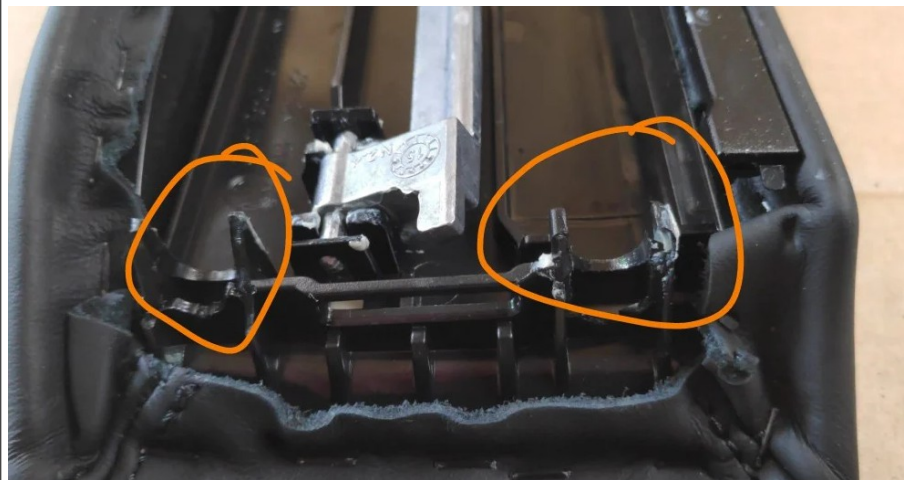
Inserting



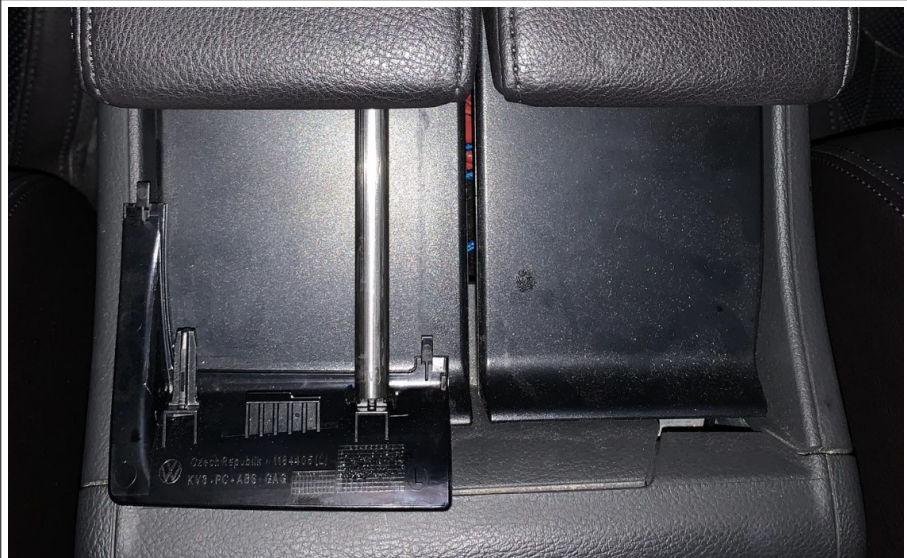
inserted





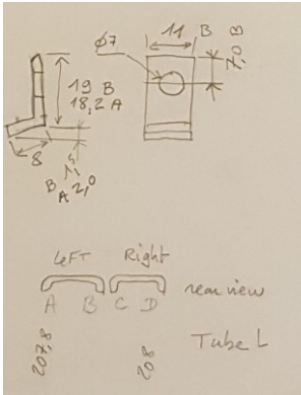
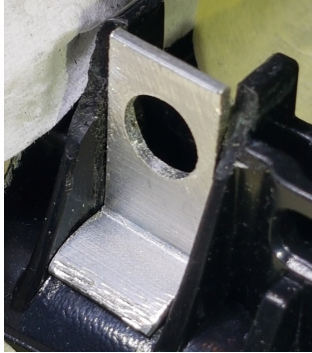
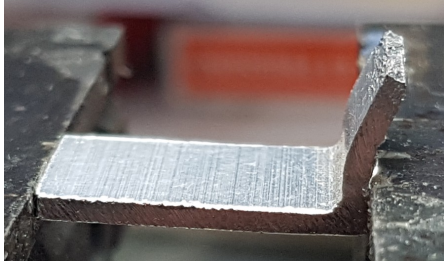

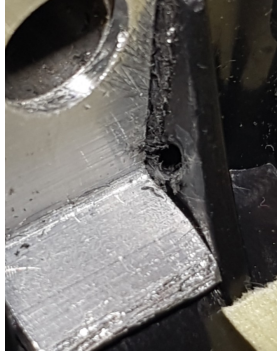
Another user's issue: the same problem
[\(1\) Replace right hand side, centre console, split armrest on 2015 3 litre TDI P7 | Club Touareg Forum](#)



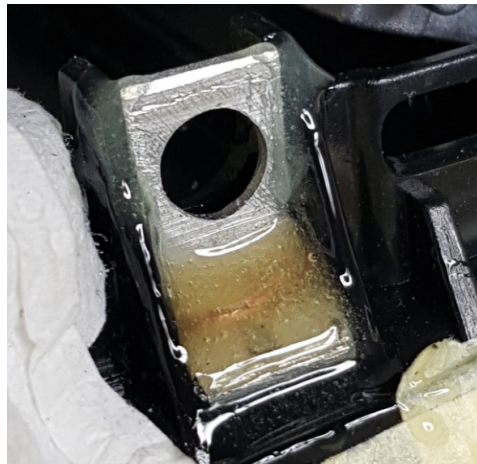
Another one.



Repair steps

<p>Mill the broken walls with a dremel or equivalent tool</p>	 
<p>Make a small piece of aluminium. Width 11mm height: 19mm for B & C, 18,5mm for A & D hole: 7,2 mm dia, at 7mm from top for B & A foot: length 8mm, bent for 1.5mm for B, 2mm for A</p>	 
	
<p>Install the aluminium part, drill a small 1,5mm hole on both sides, they will receive the copper wire</p>	 
<p>insert a short 18mm long copper wire (1,4mm dia) in 1,5mm holes. The slide tube can be set in place to adjust the position of aluminium part.</p>	

Apply epoxy glue on the aluminium part & wire,



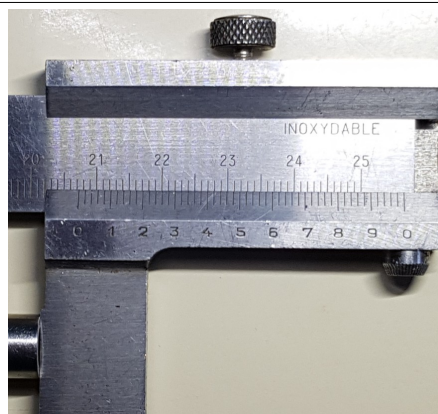
Use cyanolit glue & epoxy glue on the partly broken location.



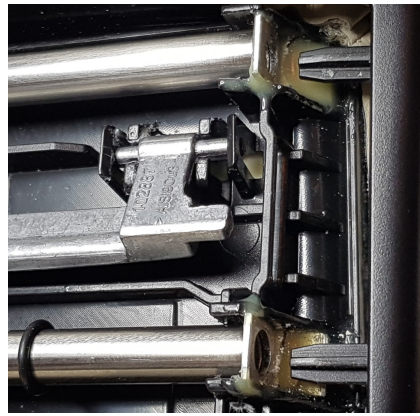
Adjust epoxy glue thickness with the dremel grinder, since the male part of the rear plate has a flat base, at least 2mm below the hole.



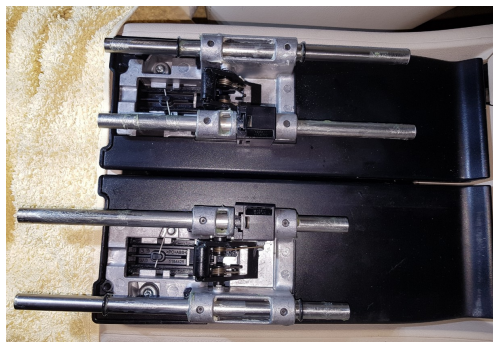
Shorten the 4 slide tubes to the length of 207,4mm. Some of them were 208mm long.



Install the tubes in the cover just to check if they can be easily inserted/removed.



Replace the tubes in the body, apply grease on them. the two O'rings are there to limit shocks when covers are slided to the maximum of their run.



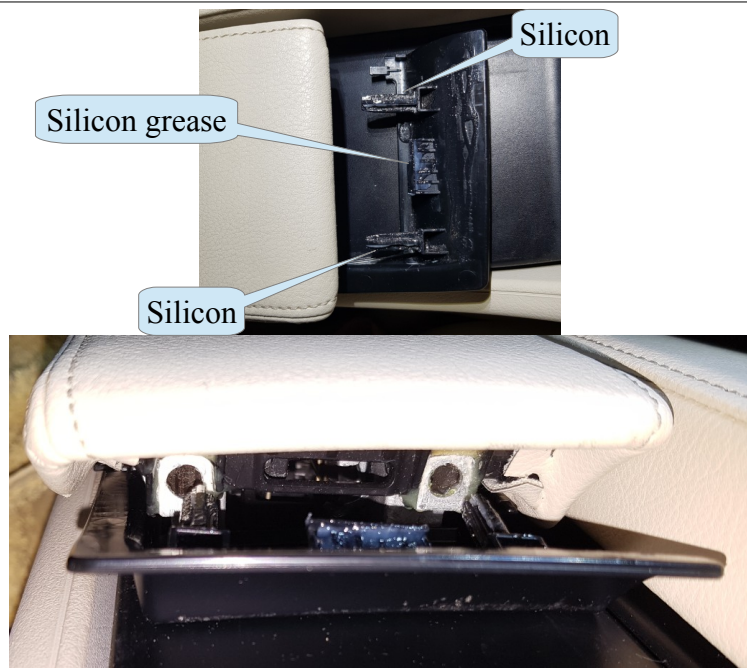
Slide the armrest on the front of the tubes, after placing the tubes as far as possible forward.



Don't forget to place the border (which has a small rubber stuck on it) of the little sliding panel, behind the border of the lower part of the armrest.



Plug in the rear plate, it is recommended to apply silicon grease on plastic part, to facilitate further disassembly... who knows...



That's all !
And it works ! They are strongly attached now.

